



Garden Rose Collection



Garden Rose Impressions quilt by Nancy Mahoney • Quilt Size: 51" square



Garden Rose Impressions

Quilt by Nancy Mahoney using the *Garden Rose* fabric collection
from *Treasures by Shabby Chic*® for P&B Textiles

Size: 51" square

Yardage Requirements

ROSE 582 B	blue large roses	3/4 yard
ROSE 582 C	purple large roses	3/8 yard
ROSE 583 B	blue tonal roses	1/2 yard
ROSE 583 G	green tonal roses	3/8 yard
ROSE 583 P	pink tonal roses	1/4 yard
ROSE 584 B	blue medium roses	1/2 yard
ROSE 584 C	purple medium roses	1/4 yard
ROSE 584 P	pink medium roses	3/8 yard
ROSE 586 B	blue tone-on-tone	7/8 yard
		includes binding
ROSE 586 C	purple tone-on-tone	1/4 yard
ROSE 586 G	green tone-on-tone	3/8 yard
ROSE 586 P	pink tone-on-tone	1/4 yard
ROSE 587 B	blue small roses	3/8 yard
ROSE 587 C	purple small roses	1/4 yard
ROSE 587 P	pink small roses	1/4 yard
BACKING	any <i>Garden Rose</i> fabric	3 1/2 yards



Garden Rose Impressions

Quilt by Nancy Mahoney using the *Garden Rose* fabric collection
from *Treasures by Shabby Chic*® for P&B Textiles

Size: 51" square

Cutting

All strips are cut across the width of fabric (wof).

From the blue tone-on-tone (586 B), cut:

- (6) 2 1/4" x wof binding strips
- (6) 2" x wof strips

From the blue tonal roses (583 B), cut:

- (6) 2 1/2" x wof strips

From the blue large roses (582 B), cut:

- (6) 3 1/2" x wof strips

From the blue medium roses (584 B), cut:

- (6) 2" x wof strips

From the blue small roses (587 B), cut:

- (6) 1 1/2" x wof strips

From the pink tone-on-tone (586 P), cut:

- (3) 2" x wof strips

From the green tone-on-tone (586 G), cut:

- (3) 2 1/2" x wof strips

From the pink medium roses (584 P), cut:

- (3) 3 1/2" x wof strips

From the pink small roses (587 P), cut:

- (3) 2" x wof strips

From the pink tonal roses (583 P), cut:

- (3) 1 1/2" x wof strips

From the purple tone-on-tone (586 C), cut:

- (3) 2" x wof strips

From the green tonal roses (583 G), cut:

- (3) 2 1/2" x wof strips

From the purple large roses (582 C), cut:

- (3) 3 1/2" x wof strips

From the purple small roses (587 C), cut:

- (3) 2" x wof strips

From the purple medium roses (584 C), cut:

- (3) 1 1/2" x wof strips

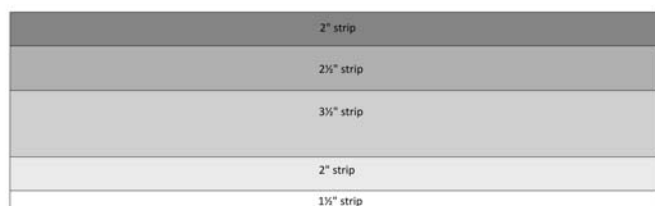
Garden Rose Impressions

Quilt by Nancy Mahoney using the *Garden Rose* fabric collection
from *Treasures by Shabby Chic*® for P&B Textiles

Size: 51" square

Assembly

1. Starting with a 2" blue tone-on-tone strip, lay out one each of the following strips; blue tone-on-tone, blue tonal roses, blue large roses, blue medium roses, and blue small roses as shown. Join the strips along their long edges to make a strip set. Press the seam allowances in one direction. Make a total of six strip sets. The strip sets should measure 9 1/2" wide. Cut these strip sets into 9 1/2" segments to make 23 blue blocks.

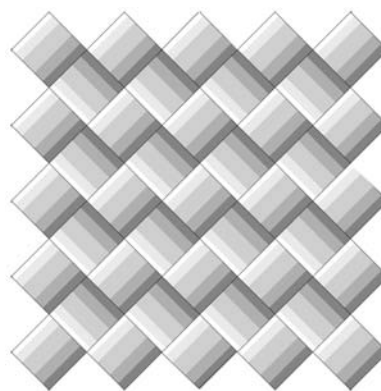


2. Repeat step 1, using the pink tone-on-tone strips, green tone-on-tone strips, pink medium roses strips, pink small roses strips, and pink tonal roses strips to make 3 strip sets. Cut these strip sets into 9 1/2" segments to make 9 pink blocks.

3. Repeat step 1, using the purple tone-on-tone strips, green tonal roses strips, purple large roses strips, purple small roses strips, and purple medium roses strips to make 3 strip sets. Cut these strip sets into 9 1/2" segments to make 9 purple blocks.

4. Placing the blocks on-point, lay out the blocks starting with a row of 5 blue blocks. Lay out a row of 4 blue blocks and then two rows of pink blocks. Continue laying out the blocks in the same way to make blue, pink, and lavender zigzags as shown in the photo.

5. Working on the diagonal, sew the blocks into rows. Press the seam allowances in opposite directions from row to row. Sew the rows together and press.



6. Using a rotary cutter and long ruler, trim away the extra fabric at the edges of the quilt top. Align your ruler with the crossed seams at the outermost points of the blocks and trim, leaving a 1/4" seam allowance *beyond* the crossed seams.

7. Machine stitch around the quilt top about 1/8" from the outer edge to stabilize the seams, being careful not to stretch the pieces as you sew.

8. Layer the quilt top with batting and backing; baste. Quilt as desired. Bind the edges to finish.